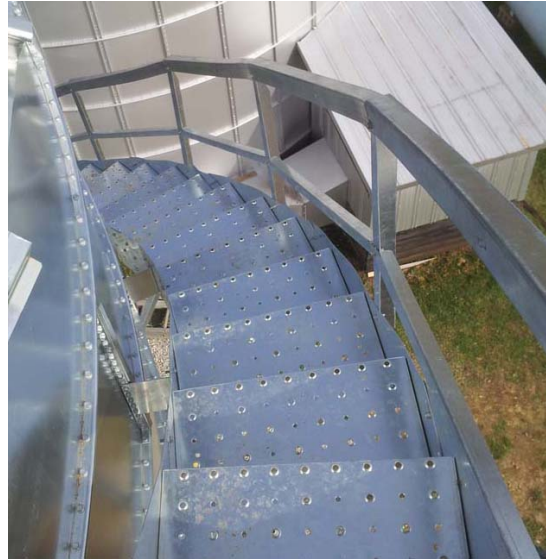




SILVER SHIELD

GRAIN BIN STAIRS



- Designed specifically for our SILVER SHIELD smooth wall grain bins, new and old.
- Attachment Brackets bolt to existing holes. No need to drill through bin wall.
- Stairway and platforms are 24" wide...some of the widest in the industry.
- Designed to support nearly than twice the loads of most competitor's stairs.
- Available for bin diameters from 15' - 61'. (others available upon request)
- Mid stair platform is also available.

CLAYTON & LAMBERT

MANUFACTURING

FAMILY OWNED AND OPERATED SINCE 1888

Copyright © 2014 Clayton & Lambert Manufacturing All rights reserved
(800) 626-5819 – www.claytonlambert.com
PO Box 9 – 3813 W Hwy 146
Buckner, KY – 40010